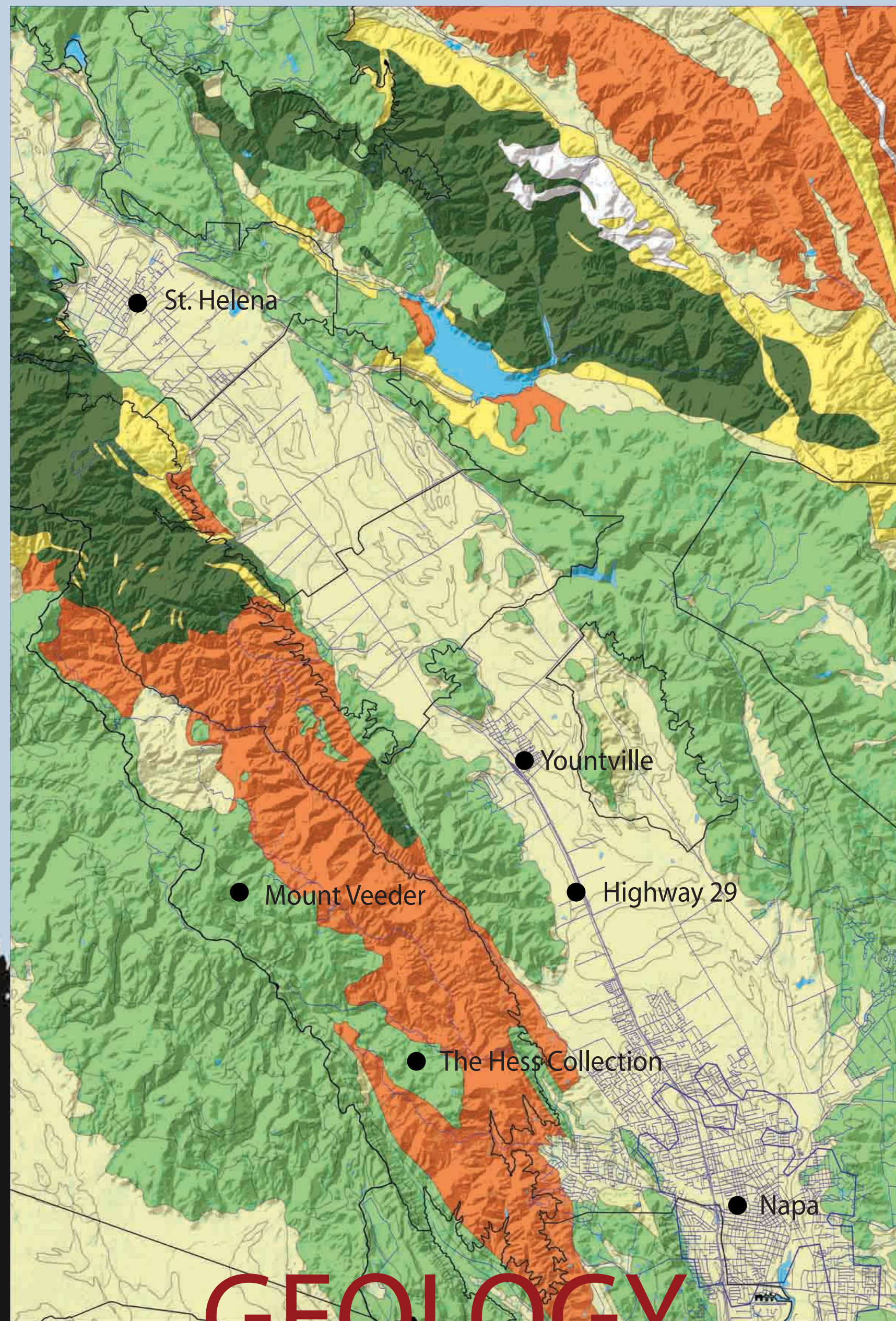




# HESS COLLECTION

## MOUNT VEEDER, NAPA VALLEY CALIFORNIA

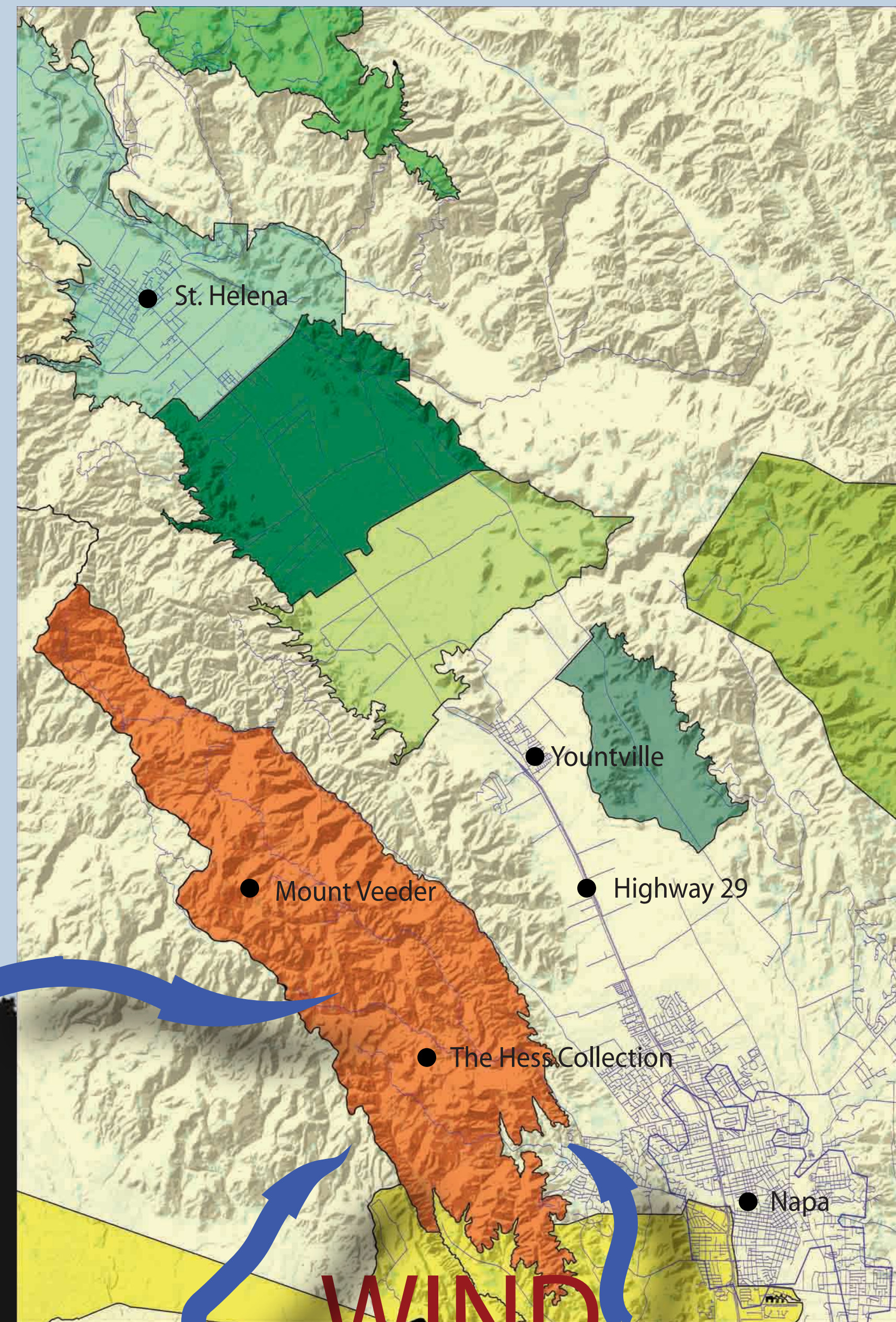


### GEOLOGY

Great Valley Sequence	Tertiary Napa Volcanics	Serpentine	Franciscan Formation	Quaternary Sediments & Bedrocks	Water
-----------------------	-------------------------	------------	----------------------	---------------------------------	-------

Soil types present in the Napa Valley

A unique geologic formation called the *Great Valley Sequence* is comprised of ancient sea floor giving the wines of this AVA a distinct flavor profile. Napa Valley's other AVAs are comprised of predominantly volcanic soils.

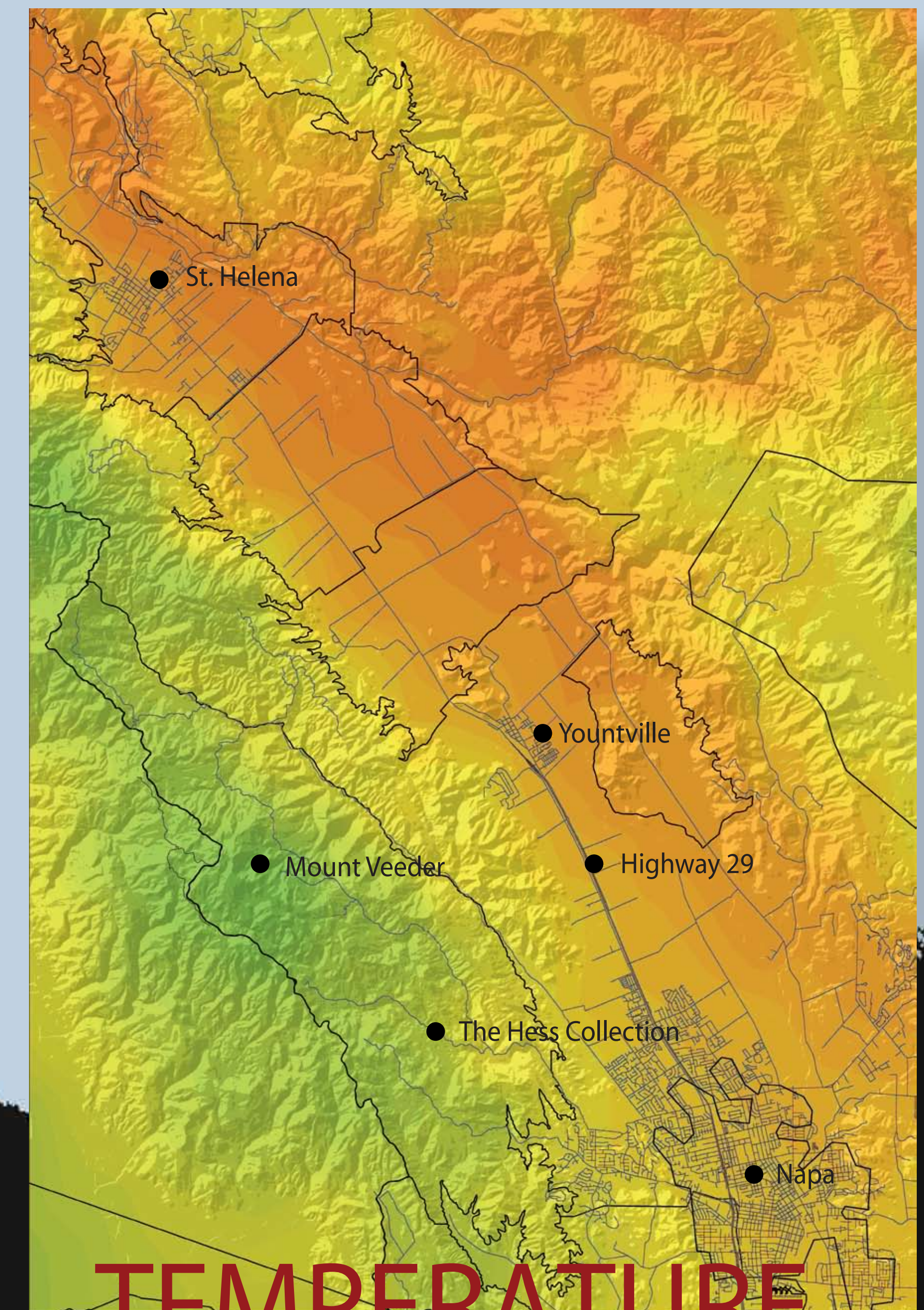


### WIND

Mount Veeder	Rutherford	Atlas Peak	Carneros
Stag's Leap	Oakville	St. Helena	Howell Mountain

American Viticultural Appellations (AVAs)

Predominant westerly winds, cooled as they flow over San Francisco Bay, bathe the Mount Veeder Appellation in more moderate temperatures than experienced by the rest of Napa Valley, creating a Bordeaux-like climate.



### TEMPERATURE

92°	89°	86°	83°	80°
-----	-----	-----	-----	-----

18 year mean daily air temperature for growing season (°F) 1981 to 1999

Average summer temperatures for the Mount Veeder AVA are cooler than the rest of the Napa Valley because of the bay winds that blow over the region. This cooler microclimate slows the ripening of the grapes and intensifies their flavor.

## MOUNT VEEDER: THE MOST UNIQUE APPELLATION IN THE NAPA VALLEY